

PREVENT HOME DAMAGE

“If you’ve got pipes, they’re gonna leak.”

Are your cabinets protected?



Avoid This!



Install Slide n' Fit



Cabinet Protected

DRIPTITE™ Sink & Vanity Base Protectors

- **Catches Water Leaks from:**
Dripping Pipes, Garbage Disposals, Water Filtration and Osmosis Systems, Angle stops, Supply hoses and Sink overflows.
- **Helps Prevent Toxic Mold Growth**
- **Saves Money, Time & Repairs!**

Recommended by plumbers, contractors, builders, landlords and cabinet makers to protect cabinets.

Protects Your Cabinets 24 Hours 365 Days a Year

The **BEST** thing you can do for under your sink!

2 Sizes Available

Kitchen fits: 22" - 42" w x 22" - 24" deep
Bath fits: 20" - 39.5" w x 18" - 19" deep

Kitchen or Bath Model

Makes Cabinets Look New!

Protected by U.S. Patent # 7757705 B2 , 7735510 B1



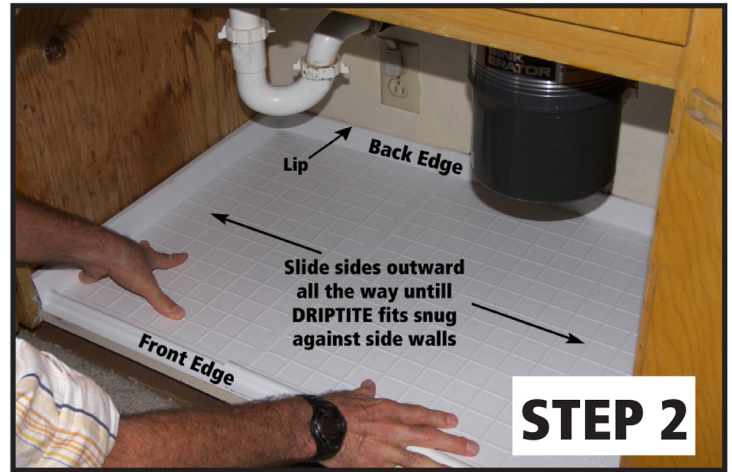
DRIPTITE™

Sink & Vanity Base Protectors

Installing Your New Driptide Slide n' Fit is *Easy and Quick!*

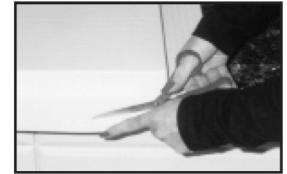


Insert your new DRIPTITE Slide n' Fit into the kitchen or bathroom cabinet.

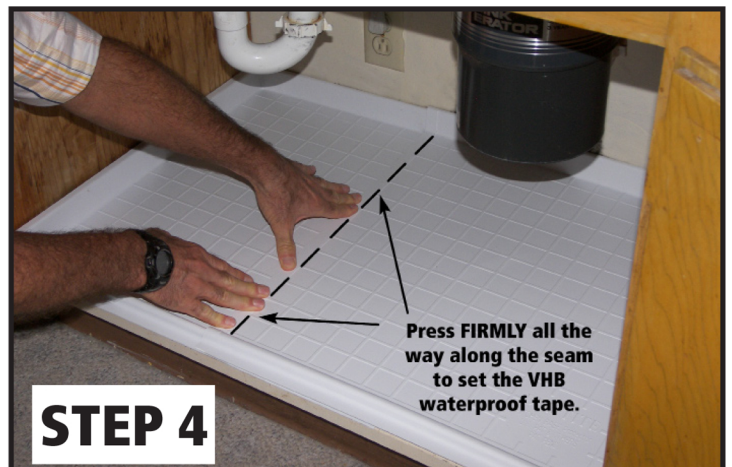


Slide both sides out from left to right expanding the pan till it fits snug against both side walls..

If your DRIPTITE doesn't fit from front to back, measure cabinet from front to back and then apply that measure to your DRIPTITE. Use a heavy duty pair of scissors (left) to trim off excess on the BACK top lip (shown) to fit your custom size cabinet.



Re-insert pan - make sure it is snug from left to right. Reach under FRONT and peel back 3M VHB waterproof tape from front to back (along seam).



Press **firmly** down along the **entire** seam several times to set the tape. VHB tape will cure in 24 - 48 hours. We recommend a bead of clear or white silicone caulk down the seam for extra water tight protection. Some people caulk around the top edges (adjoining cabinet walls) also.

Limited 1 (one) Year Warranty

If your DRIPTITE Slide N' Fit pan (part) fails because of a manufacturing defect within 1 (one) year from the date of purchase, we will provide a new part at our option, without charge. Return the defective part directly back to the A/P Office (DRIPTITE, 25422 Trabuco Rd., Suite 105-622, Lake Forest, CA 92630) with a copy of the "proof of purchase". If the part is defective, it will be exchanged. This warranty does not cover parts that are improperly installed, damaged, abused or used for other than the intended purpose. It does not include the cost of returning the part to the vendor from which it was purchased, the labor to remove, install or diagnose the failure, parts used in the commercial applications, and incidental or consequential damage caused by possible defects with the parts.

Disclaimer: This product is not intended to prevent serious flooding from the plumbing under sinks. It is designed to handle plumbing drips and leaks that occur with 'normal' sink usage.